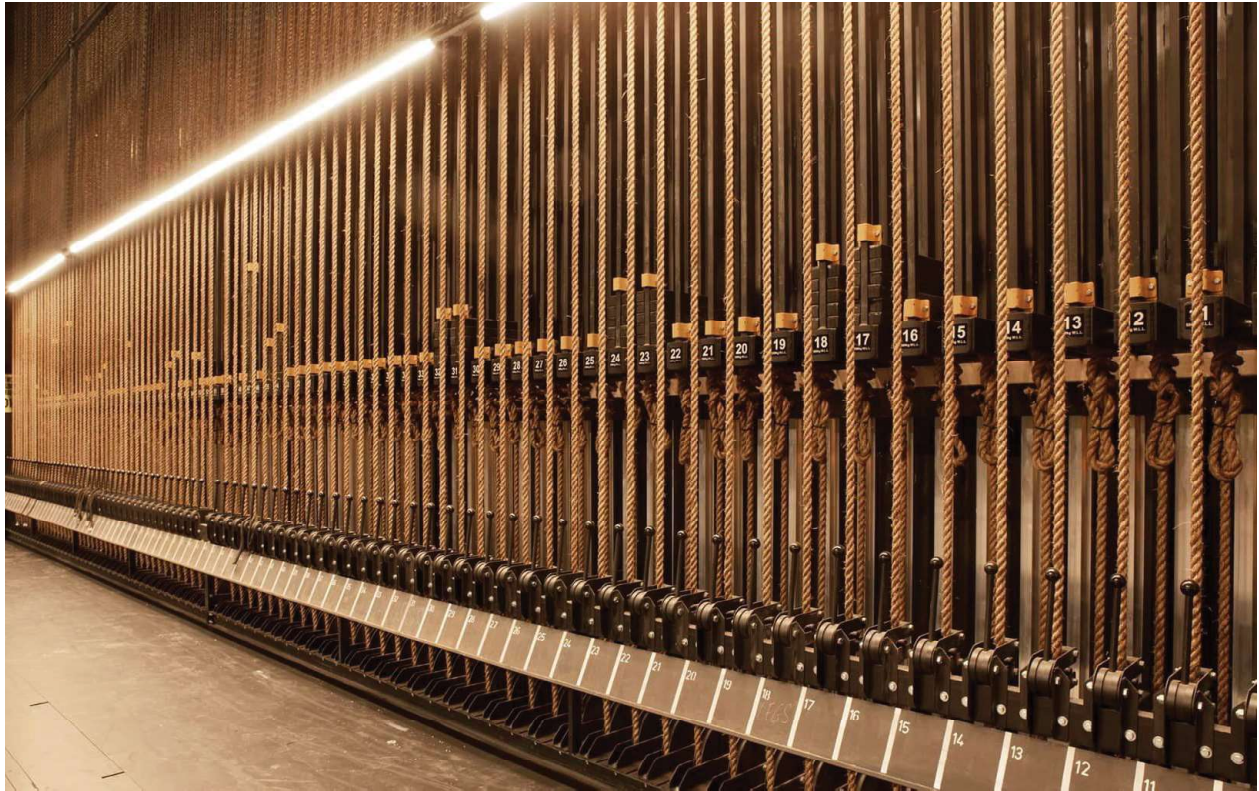




INSTALLATION THEATRICAL ENGINEERING



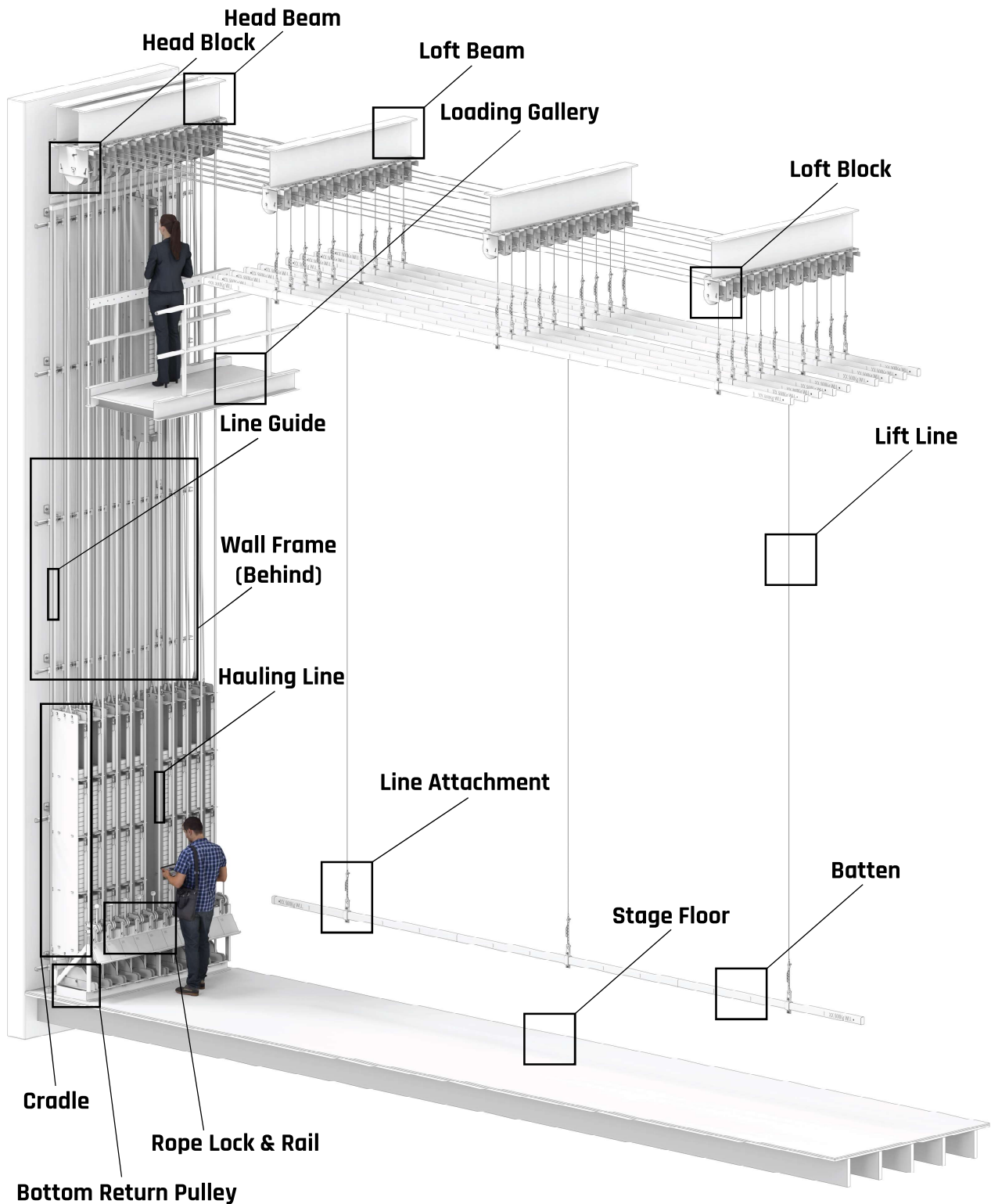
# THE NEXT GENERATION OF COUNTERWEIGHT SYSTEMS

Engineered for Performance

# INTRODUCTION

Designed with precision and safety in mind, ITE Counterweight Systems seamlessly elevate performances to new heights. With robust construction and safety at its core, ITE Counterweight Systems provide the perfect balance between innovation, cost effectiveness and reliability.

# CONFIGURATION



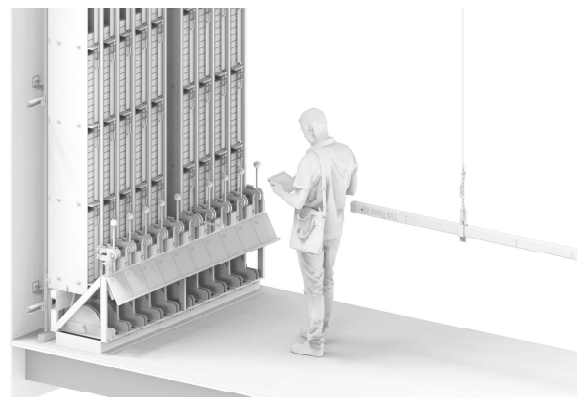
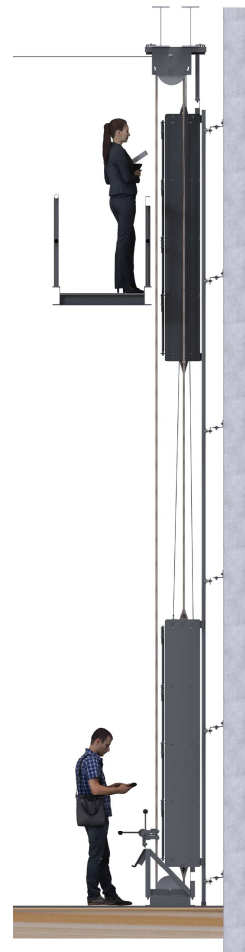
## SAFETY



- All sheaves are constructed from structural nylon.
- All bearings are designed for a velocity of atleast 5m/sec.
- All bearings are pre-lubricated and sealed for life.
- All load bearing bolts are structural 8.8 with locknuts.
- Head sheaves are minimum 300mm diameter.
- Loft sheaves are minimum 200mm diameter.
- All wire rope is steel core 7x19 - 6mm minimum.
- All SWR terminations are machine swaged.
- Cradles can be shelved to prevent injury when loading.
- Steel Mesh Counterweight Protection Cage as standard.
- Counterweights are smooth and free of burs.
- Counterweights feature grooves or holes for ergonomics.
- Counterweights are split between 6kg and 12kg sets.
- Rope Locks are designed for 200N out of balance load.
- Signage is provided detailing batten load limits.
- Rope clamps are provided for temporary out of balance loads.
- Batten ends are fitted with yellow safety caps.

## FUNCTIONALITY

- Guide shoes are nylon and silent in operation.
- Pulleys are nylon and silent in operation.
- Rope locks are adjustable allowing for 18 - 22mm rope.
- Ropes are manila as standard, however synthetic alternatives are available.
- Battens are designed to balance an empty cradle.
- Cradles can feature shelves and / or lockable front doors.
- Lock rails are line marked and suitable for chalk or blackboard pens.
- Line attachments feature long link trim chain for adjustment as required.
- Line attachments can feature rated karabiners for quick line changes.
- Counterweight shelves can be provided for easy weight storage.



# CONSTRUCTION & CERTIFICATION

All ITE system components are designed and certified by qualified engineers and are custom made in ITE's Port Melbourne workshop by qualified and experienced metal fabricators.

## CRADLE OPTIONS

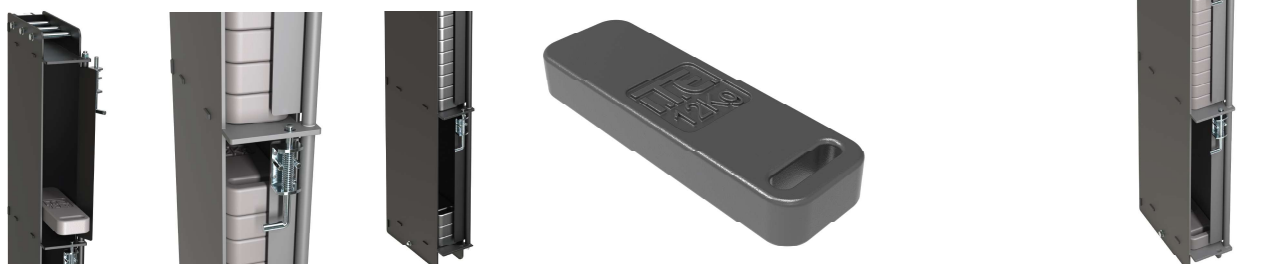
### Standard Counterweight Cradle

- Simple, robust and durable design.
- Can be modified to feature shelves.
- Allows for easy stacking of 6kg & 12kg counterweights.
- Features a yellow weight stop to prevent weights from falling out of cradle.
- Features clear line marking.
- Features easy bottom tie point for adjusting hauling lines.
- Suitable for line working load limits up to 500kg.
- Flexible in construction to allow for smaller loads such as 350kg.
- Cast counterweights feature grooved sides for ergonomics.
- Guide shoes are smooth and silent in operation.
- Top line attachment is flexible allowing for 3-8 line systems.



### Front Loading Counterweight Cradle

- Simple, robust and durable design.
- Features shelves as standard.
- Allows for easy stacking of 6kg & 12kg counterweights at different heights.
- Lockable front door ensures weights are secure during moves.
- Cradles are more easily and safely loaded into cradle.
- Features easy bottom tie point for adjusting hauling lines.
- Suitable for line working load limits up to 500kg.
- Flexible in construction to allow for smaller loads such as 350kg.
- Cast counterweights feature holed ends for ergonomics.
- Guide shoes are smooth and silent in operation.
- Top line attachment is flexible allowing for 3-8 line systems.









## INSTALLATION THEATRICAL ENGINEERING



### CONTACT US

---

-  816 Lorimer Street Port Melbourne VIC 3207
-  +61 3 9646 0822
-  [www.ite.net.au](http://www.ite.net.au)
-  [info@ite.net.au](mailto:info@ite.net.au)